

Press Release

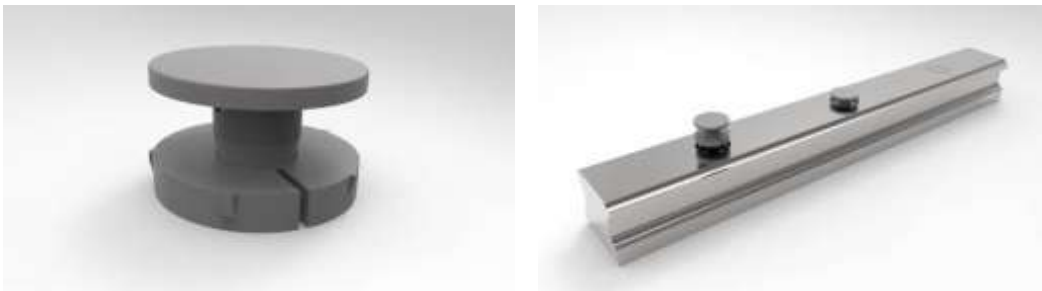
Schaeffler at the Hannover Messe 2019 (Hall 22, Booth D43)

Finished in a matter of seconds: Insert, drive in, and the job is done.

Schaeffler's new closing plugs for INA profiled guide rails allow outstandingly fast and secure mounting: After all, even things that seem simple still leave room for innovation. They combine the advantages of one-piece closing plugs with those of two-piece closing plugs to make wall and overhead installation child's play.

HANOVER/HOMBURG, *January 24, 2019.* Closing plugs for profiled guide rails have to perform significantly more functions than may at first be apparent. The top priority for many customers is fast and simple mounting, a minimal annular gap between the plug and guide rail surfaces, and a high retaining force. Schaeffler fulfills these essential customer requirements with its new patented KA-TN/B closing plugs. The KA-TN/B plastic closing plugs have a special feature: The plastic plug is joined to the respective component by means of a clinch ring. Mounting the closing plug simply involves inserting it into the bore and then driving it in until it is flush with the surface. There is a predetermined breaking point between the clinch ring and the plug, which comes loose when the plug is driven in, while small clamping lugs on the clinch ring hold the closing plug securely in position in the bore. This innovative design now makes it possible to manually place several closing plugs into the bores and drive them in one by one in a single working step. This shortens the mounting time more than fourfold in comparison to other systems. The previously very complex tasks of wall and overhead mounting thus no longer pose any problems. Any tilting of the closing plug while it is being driven in is virtually eliminated by the clinch ring's guidance. The small dimensions of the annular gap between the closing plug and the counterbore make it virtually impossible for fluids and contamination to accumulate there, and ensure that the guide carriage is well-sealed.

Pictures: Schaeffler



The new KA-TN/B closing plugs can be mounted in seconds: Simply insert into the bore until the end stop is reached and drive in using a hammer and mounting block until flush with the surface.

About Schaeffler

The Schaeffler Group is a global automotive and industrial supplier. Top quality, outstanding technology, and exceptionally innovative spirit form the basis for the continued success of the company. By delivering high-precision components and systems in engine, transmission, and chassis applications, as well as rolling and plain bearing solutions for a large number of industrial applications, the Schaeffler Group is already shaping “Mobility for tomorrow” to a significant degree. The technology company generated sales of approximately EUR 14 billion in 2017. With more than 92,000 employees, Schaeffler is one of the world’s largest family companies and, with approximately 170 locations in over 50 countries, has a worldwide network of manufacturing locations, research and development facilities, and sales companies.

The Industrial division supplies components and systems for around 60 industrial sectors via its worldwide organization with market proximity and its application support service. The range includes miniature bearings only a few millimeters wide through to large-size bearings with an outside diameter of several meters.



[Schaeffler](#)



[Twitter](#)



[Facebook](#)



[Youtube](#)